



PORTABLE TRAFFIC LIGHTS DATASIGN-PTL

Certificate Number 1305-PTS3ARI-0-1

**RMS
TYPE APPROVED**



<p>Unbeatable Return on Investment</p>	<p>Sustainable, Renewable, Environmentally Friendly</p>	<p>Proven Reliability</p>	<p>Easy to Use and Operate</p>
<p>Standards Compliant</p>	<p>Latest Technology</p>	<p>2 Year Limited Warranty</p>	<p>Dependable Service and Support</p>

DATASIGN-PTL

Designed and manufactured as a complete product by Data Signs, the DATASIGN-PTL is a very easy to use, fully solar powered Traffic Light trailer set. The DATASIGN-PTL features our revolutionary, very user-friendly, newly-designed controller as well as an electric hoist.

BUILT TO AUSTRALIAN STANDARD AS4191-1994

TRAILER SIZE: (together): 1400W x 2050H x 3620L
SHIPPING SIZE: (together): 1400W x 2050H x 2570L
SETUP SIZE, Master: 1400W x 2950H x 2030L
SETUP SIZE, Slave: 1400W x 2950H x 1580L
COMBINED WEIGHT: 700kg (with Slave Drawbar and Spare Wheel fitted)



- 200 mm ultra-bright very low power aspects
- Solar powered, with maintenance-free battery pack for continuous operation.
- Schedule different Red/Green Times (3G/GPS option required)
- Yagi Antennas for long RF range fitted as standard.
- Remotely monitor your PTL set with WebVMS™ (3G/GPS option required).

OPTIONS:

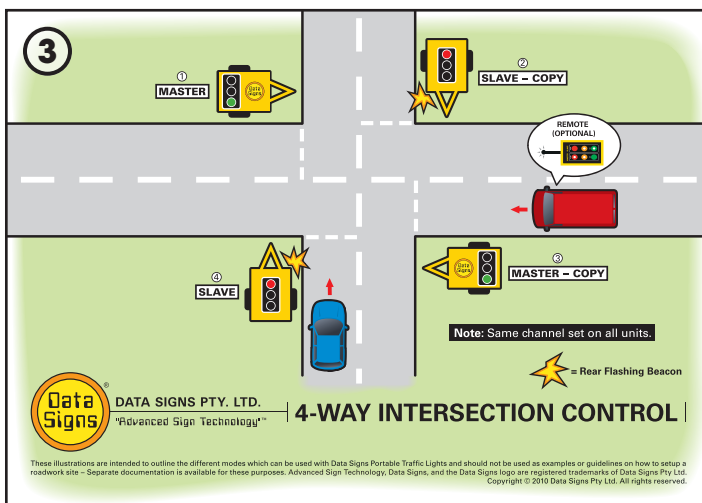
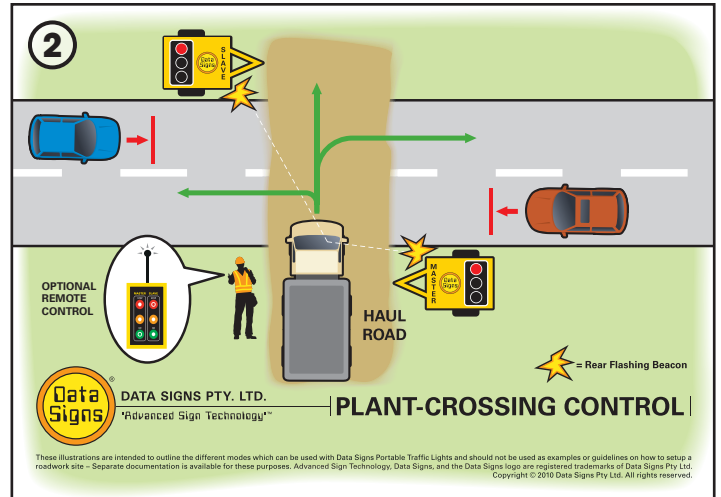
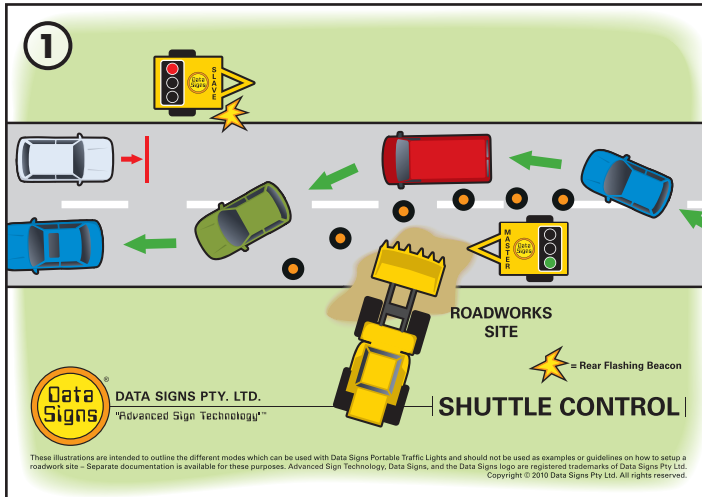
- PTL Remote
- Vehicle Detectors
- Spare Wheel
- 240V Battery charger
- Slave Tow bar
- 3G/GPS Module

www.datasigns.net

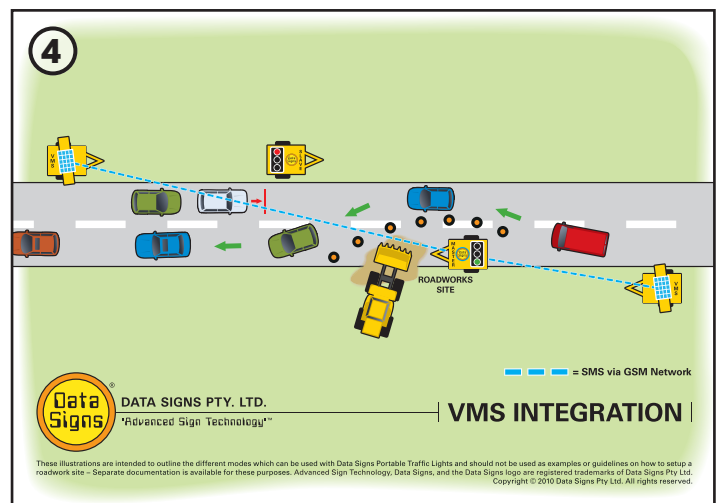
DATA SIGNS PTY. LTD. // Phone: 1300 850 785 // Made in Australia // "Advanced Sign Technology"



DATASIGN-PTL OPERATIONAL CONTROL



Note: 2 PTL-300 sets required.



Note: Only works with Data Signs' VMS. SIM cards required.

DATASIGN-PTL REMOTE COMMUNICATIONS

- 900 MHz (ISM Band) or 2.4 GHz available.
- Automatic frequency hopping, over 8 channels.
- Range between Master and Slave units: 1.6km line-of-sight
- Range between Master and Remote Control: 500 metres line-of-sight



Radio Remote Control