



# OLDER CONTROLLERS & LED PANELS

## CAN I PROGRAM A MESSAGE LOCALLY?


YES a VMS Computer option is available to program your sign locally, HOWEVER it may require controller or software and hardware upgrades. (see below "Controller upgrades")

## **PLEASE DISREGARD THE BELOW IF YOUR CONTROLLER IS NOT OLDER THAN 5 YEARS OLD**

Controller upgrades for signs older than 5 years is possible **most** of the time, however the following conditions would have applied:

- Controller upgrades which include having to change wiring harnesses and install new control and Fuse panels MUST have been carried out by a "qualified" Auto Electrician as a minimum or an Electronics Technician. Data Sign may require evidence of this. The cost for this is NOT covered by Data Signs or is part of the Upgrade cost listed.
- LED Boards are compatible with your updated controller (see examples below of Non Compatible LED Boards), otherwise they must be replaced with current type LED Boards
- Solar Panels and Chargers have been tested and found to be in good operating order.
- Batteries have been tested and found to be in good condition

### BCP, RM-32, and RM-32B Controllers (signs older than 5 years)



Part Number (52050)  
Includes:





- ✓ RM-32D Controller.
- ✓ Simple wiring harness.

✓ Extra Aerial 3mtr length  
✓ Control panel & Label for Hoist and Message

Data Signs SIM card optional  
(Refer to Data Signs SIM document)

The controller being replaced will retain the same Serial number and access to the DS-Live Platform.  
Your existing SIM card will need to be exchanged for a Micro SIM to suit the new RM-32D Controller.

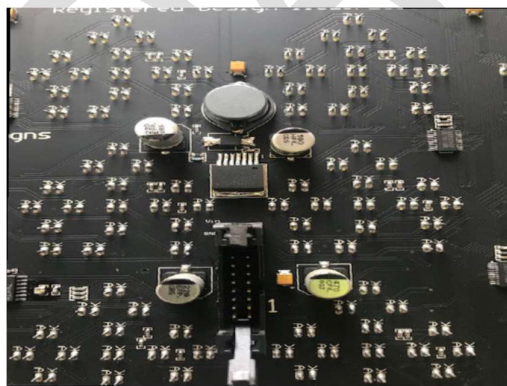
**Users Beware!**  
The Controllers supplied by Data Signs are tested and are in good working condition when shipped, warranty however is conditional on properly installed upgraded signs as stipulated in this and supplied documents. Damage caused to the controller due to conditions outside of Data Sign's control is **NOT** covered & cost are not refundable.

BCP Controller
RM-32
Earlier RM-32B
RM-32B

\*per sign

### Examples of LED boards and Signs **NOT SUITABLE** for upgrades



LED Boards fitted with DC-DC Circuit



Controllers fitted with DC-DC converters, either external or internal

- WHEN UPGRADING LED BOARDS IN SIGN HEADS, ENSURE ADEQUATE SOLAR PANEL CAPACITY IS AVAILBLE FOR THE DISPLAY. SOLAR PANELS DEGRADE OVER TIME AND MAY NOT PROVIDE ENOUGH POWER TO SUPPLY THE SIGN OR MAINTAIN BATTERY CHARGE.
- SIGNS FITTED WITH AMBER LED BOARDS MUST **NEVER** BE REPLACED OR UPGRADED WITH COLOUR LED BOARDS
- CONTACT DATA SIGNS TO OBTAIN PRICING ON FULL SIGN LED BOARD UPGRADES.
- DATA SIGNS ALSO OFFER COMPLETE SIGN HEAD REPLACEMENT, HOWEVER NEVER REPLACE AMBER SIGNS WITH A COLOUR SIGNS