

# PTL TRUCK LOADING PROCESS



## Preparing the PTL trailer set for truck transportation



## Removing the front drawbar

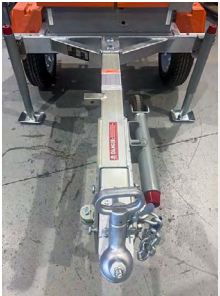


1. Switch OFF and LOCK-OUT the power supply.

Do this for front and rear trailers.



1. Using a 36mm spanner and torque gun, remove both bolts, washers and nylocks. Reassemble and store in rear compartment.



2. Lower both front jack stands first.

Lift and stow jockey wheel.



2. Remove pin as shown, and place on Mudguard.



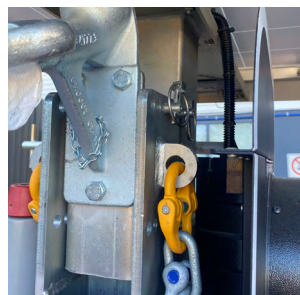
3. Remove and store trailer cable.



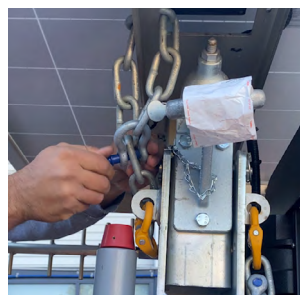
3. Pull out drawbar.

**⚠ (CAUTION HEAVY 35 Kg)**

Lift and place drawbar onto post bracket as shown. Now use the PIN to lock the drawbar into place at the top bracket.



4. Use the Spring clip to lock the pin into place on the opposite side of the bracket.



5. Now remove the D-Link and feed the safety chain through the top section and then lock back onto the chain as shown.

It is highly recommended that you watch the YouTube video as part of this document and loading process.



To watch a video demonstration, scan the QR code and select "PTL Truck Loading Process" video.





## Lifting the trailer set



**CAUTION:**  
MOVE VERY SLOW AND LOW  
TO THE GROUND UNTIL  
ACTUAL LIFT, AS LOAD IS  
UNSTABLE ON LONG TINES.



## Strapping the trailer set down



1. Ensure forklift extension tines are safely fitted to the Forklift.

**Minimum Tine length: 1800mm**



1. USE 2500Kg STRAPS.

Place straps at the REAR of the trailer as shown. Do this on both sides.

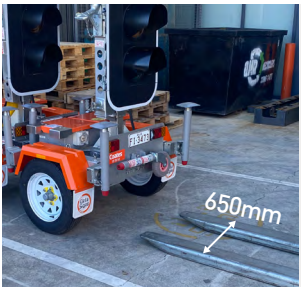


2. Raise rear lights to clear forklift away from Visor.



2. Feed strap over trailers.

Ensure cable is removed from tie down strap.



3. Bring the tines inward to a distance of 650mm wide (outside measurement).



3. Fit Ratchets on opposite side and tension.



4. Slowly lift and position the trailer set over the truck tray.

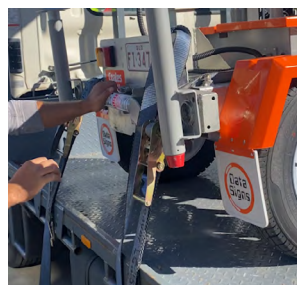
Ensure the jack stands are sitting on the deck.



4. Lift up jack stands.



5. Lower the rear lights down again



5. Ensure minimal movement once straps are tensioned.



**WHEN LIFTING TRAILER SET OFF THE TRUCK, LOWER JACKS DOWN FIRST TO DECK AND RAISE REAR TRAILER SO VISORS ARE AWAY FROM FORKLIFT LIFTING FRAME.**

**HAVE TINES UNDER TRAILER SET, LIFT TO TAKE UP TENSION AND THEN RELEASE STRAPS.**